

MILFORD RESIDENT APP



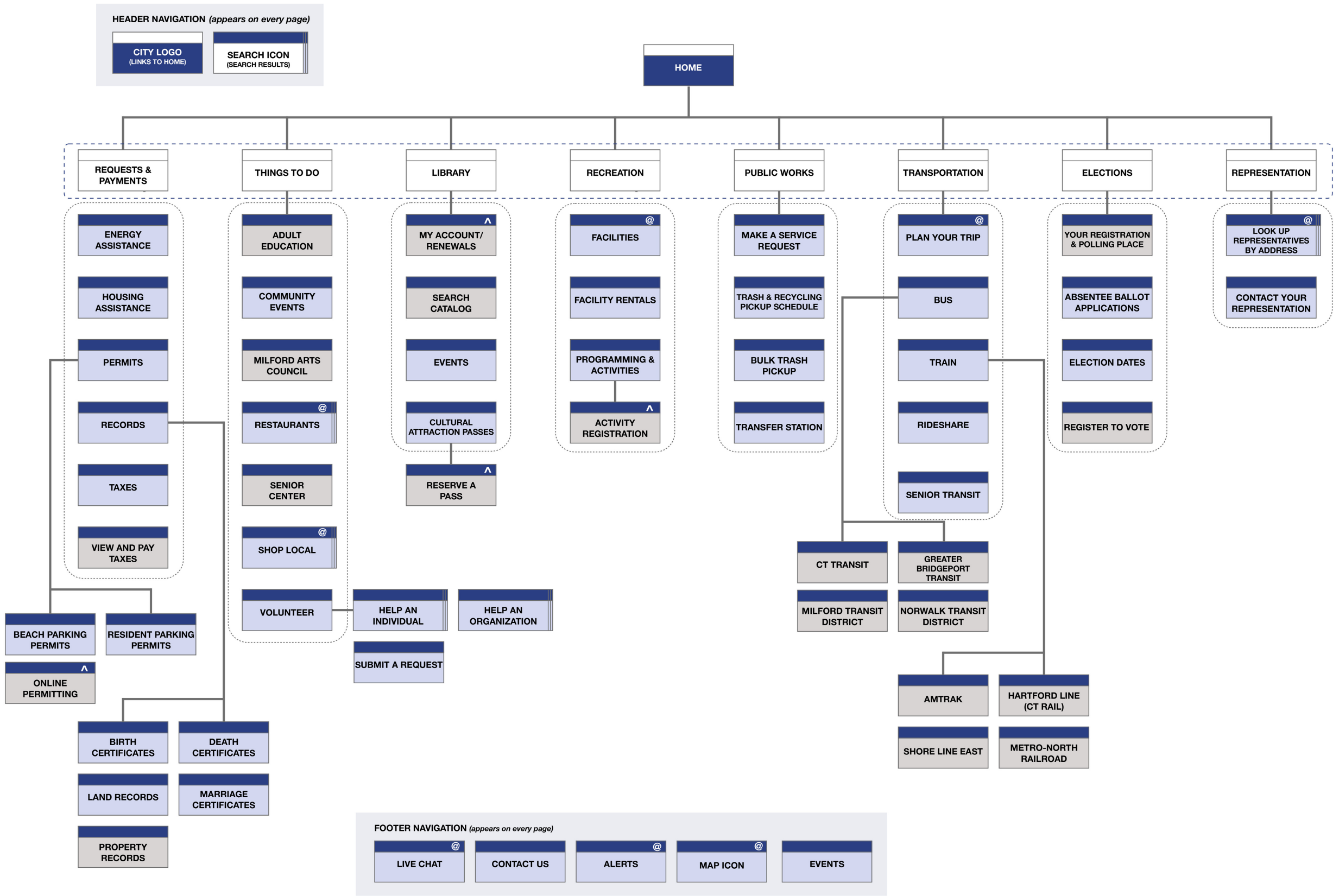
KIM SHEPHERD



PROJECT PURPOSE

Create a companion app for the city of Milford, Connecticut's government website (ci.milford.ct.us) with an exclusive focus on the needs of the city's residents. The app will function as an on-the-go resource for residents to be connected with their city and conduct common government-related business, such as paying taxes, placing public works service requests, learning election or voting information, and contacting their representatives. The app will attempt to integrate these government-related functions with more community-related functions, such as events, transportation needs, recreation activities, and supporting local businesses, as this is the way residents view their experience of living in a city. A resident may want to renew a library book, find a local restaurant to eat dinner at, and look up a commuter train schedule all on the same day. Why not help them do all of this in 1 app, dedicated to improving the overall experience of living in their city? If Milford is the "Small City with a Big Heart" then this app should help residents feel it's pulse.

PROPOSED SITE MAP



LEGEND

HOME PAGE

PAGE WITH CONTENT

EXTERNAL DOMAIN

MENU ITEM ONLY

MULTIPLE PAGES WITH CONTENT

PAGE WITH ONLY LINK DIRECTORY TO CONTENT PAGES

DROP-DOWN NAVIGATION

GLOBAL NAVIGATION

POSSIBLE INTEGRATION

LOGIN REQUIRED