

# MILFORD MUNICIPAL WEBSITE IA REDESIGN



KIM SHEPHERD



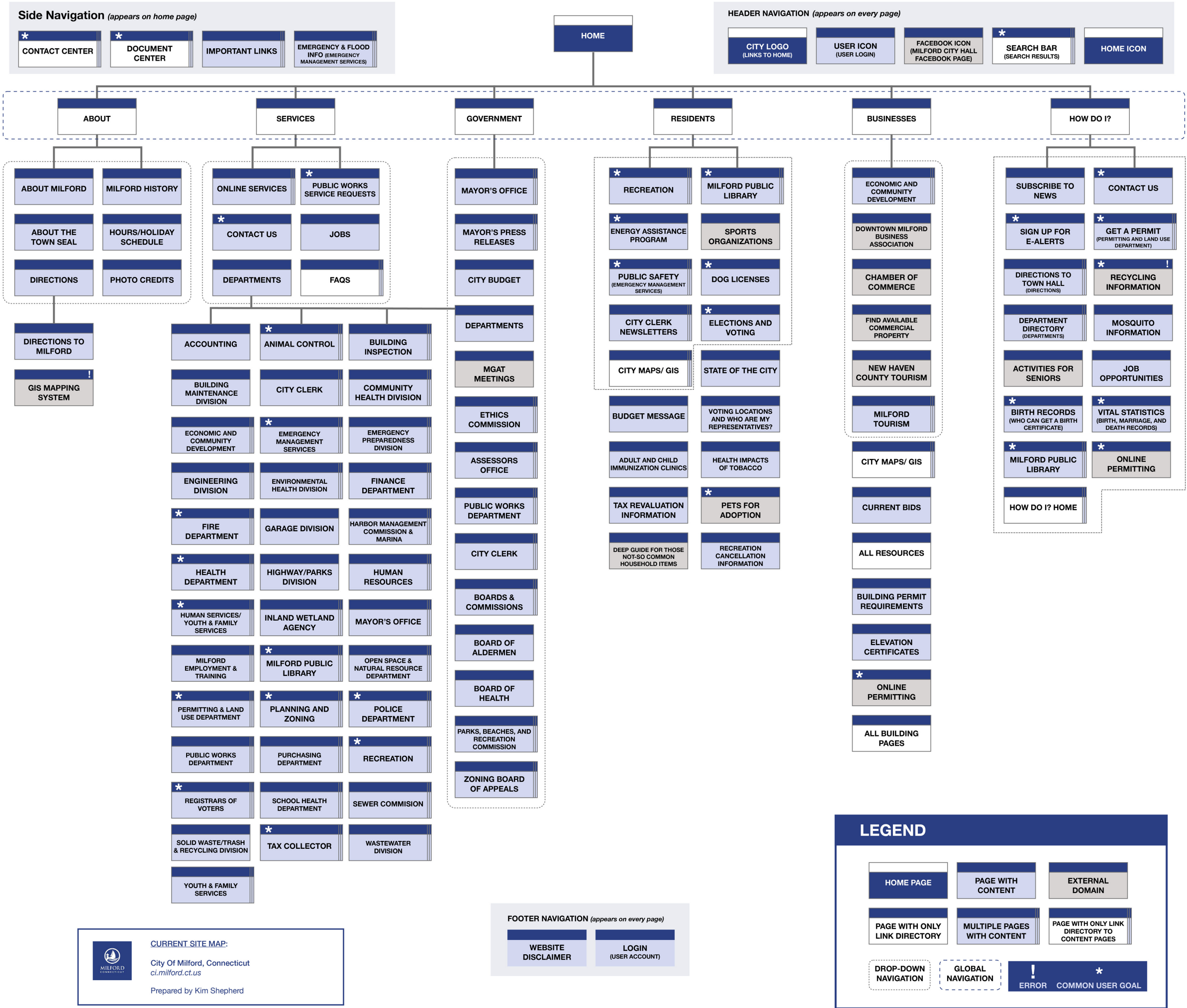


## PROJECT PURPOSE

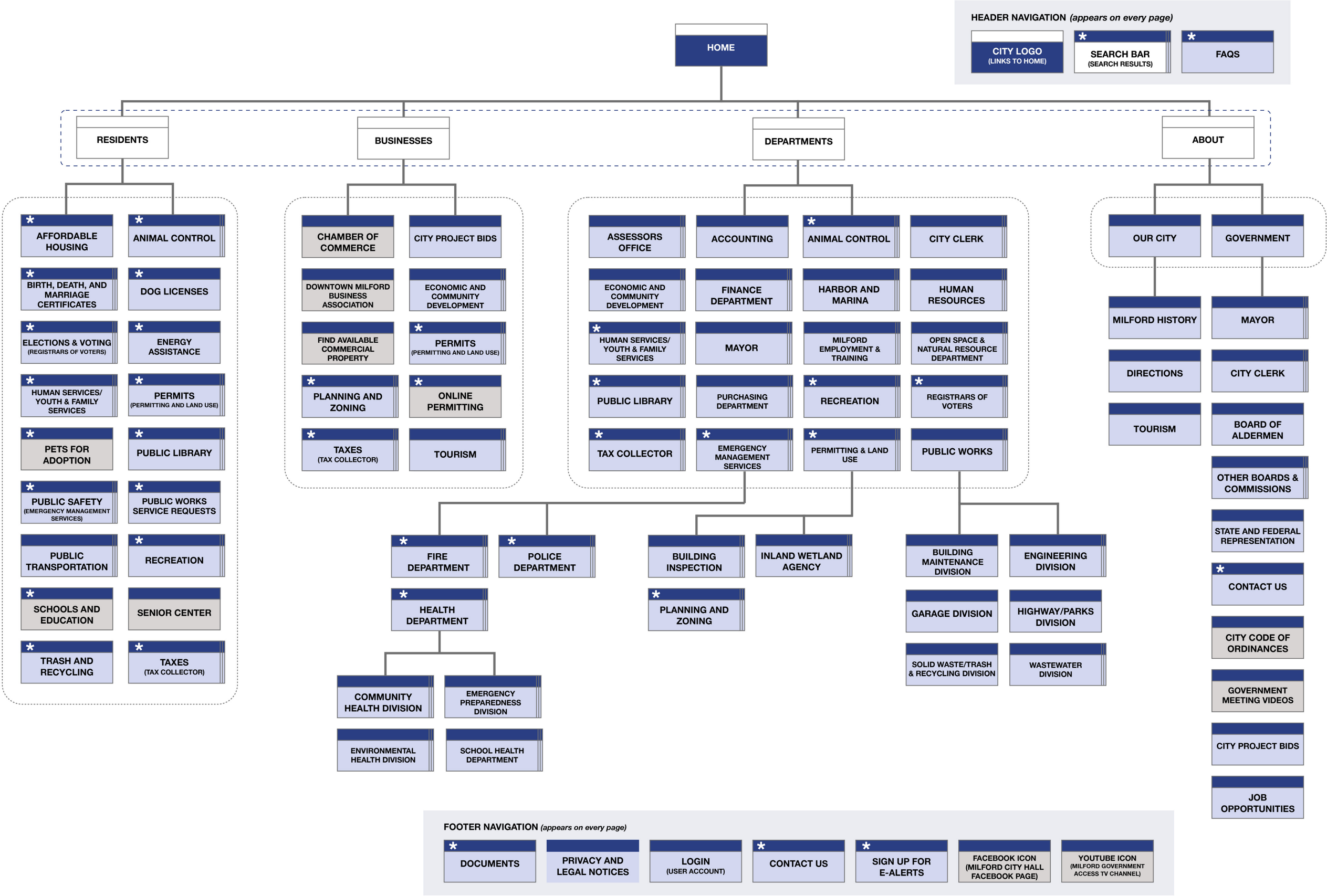
Milford, Connecticut, a city of over 50,000 people, currently relies on a central website ([ci.milford.ct.us](http://ci.milford.ct.us)) for information related to its local government and other municipal functions. This site's information architecture (IA) and content were evaluated in order to create a current site map. The most common groups of users for the site were determined to be residents of the city followed by businesses and businesspeople operating or wishing to operate within the city. With these 2 groups of users and their most common goals in mind, the current information architecture was examined for opportunities to improve their ability to quickly and easily navigate the site and discover relevant content. The following proposed site map was developed based on this evaluation.



CURRENT SITE MAP



PROPOSED SITE MAP



PROPOSED SITE MAP:  
City Of Milford, Connecticut  
ci.milford.ct.us  
Prepared by Kim Shepherd

LEGEND

- HOME PAGE
- PAGE WITH CONTENT
- EXTERNAL DOMAIN
- MENU ITEM ONLY
- MULTIPLE PAGES WITH CONTENT
- PAGE WITH ONLY LINK DIRECTORY TO CONTENT PAGES
- DROP-DOWN NAVIGATION
- GLOBAL NAVIGATION
- \* COMMON USER GOAL